

Mariposa Garden

Designed by Wendy Sheppard
Featuring the Whisper collection by Victoria Johnson
Size: 41" x 50"



Check www.windhamfabrics.com Free Project section to see if there are any pattern updates before you start your quilt project



812 Jersey Ave ~ Jersey City, NJ 07310 ~ 201.659.0444 ~ FAX: 201.659.9719
www.windhamfabrics.com email: retail@windhamfabrics.com

Mariposa Garden

Page 2

Supplies:

- A. 3/8y butterscotch toss floral print (41360-1 Butterscotch)
- B. 1/2y focal print (41359-X Multi)
- C. 1/4y blue dandelion print (41361-3 Soft Blue)
- D. 1/4y butterscotch butterfly print (41363-1 Butterscotch)
- E. 1/2y white solid (31835)
- F. 3/8y navy on blush print (41364-2 Blush)
- G. 3/8y blush on navy print (41364-6 Navy)
- H. 1/4y blush butterfly print (41363-2 Blush)
- I. 1/4y butterscotch leaf print (41362-1 Butterscotch)
- J. 1/2y blue toss floral print (41360-3 Soft Blue)

Optional: 3/8y butterscotch butterfly print (41363-1 Butterscotch), cut into 2 1/4" strips. Piece strips to make a continuous binding strip.

47" x 56" piece of backing fabric

47" x 56" piece of batting

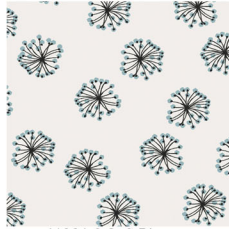
Basic sewing supplies



41360-1 Butterscotch



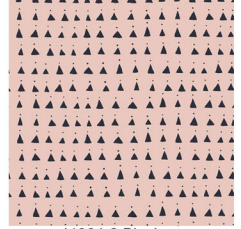
41359-X Multi



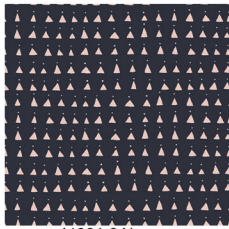
41361-3 Soft Blue



41363-1 Butterscotch



41364-2 Blush



41364-6 Navy



41363-2 Blush



41362-1 Butterscotch



41360-3 Soft Blue



WINDHAM FABRICS

Mariposa Garden

Page 3

Block Identification:

Block A



Block B



Cutting Instructions:

1. From fabric A, cut for:

Block A -

Widthwise, 7 (1 1/2" x 42"). Subcut 10 (1 1/2" x 11 1/2") and 10 (1 1/2" x 12 1/2") rectangles.

2. From fabric B, cut for:

Block A -

Widthwise, 2 (7 1/2" x 42"). Subcut 5 (7 1/2" x 10 1/2") rectangles.

3. From fabric C, cut for:

Block B -

Widthwise, 4 (1 1/2" x 42"). Subcut 8 (1 1/2" x 9 1/2") and 8 (1 1/2" x 10 1/2") rectangles.



WINDHAM FABRICS

Mariposa Garden

Page 4

4. From fabric D, cut for:

Block B -

Widthwise, 3 (1 1/2" x 42"). Subcut 8 (1 1/2" x 5 1/2") and 8 (1 1/2" x 6 1/2") rectangles.

5. From fabric E, cut for:

Sashing rectangles and strips -

Widthwise, 5 (1 1/2" x 42"). Subcut 6 (1 1/2" x 14 1/2") rectangles and 2 (1 1/2" x 35 1/2") strips.

Inner border -

Widthwise, 5 (1 1/2" x 42"). Subcut 2 (1 1/2" x 37 1/2") strips from 2 strips. Piece remaining 3 strips and subcut 2 (1 1/2" x 44 1/2") strips.

6. From fabric F, cut for:

Block A -

Widthwise, 5 (1 1/2" x 42"). Subcut 10 (1 1/2" x 9 1/2") and 10 (1 1/2" x 10 1/2") rectangles.

7. From fabric G, cut for:

Block B -

Widthwise, 6 (1 1/2" x 42"). Subcut 8 (1 1/2" x 11 1/2") and 8 (1 1/2" x 12 1/2") rectangles.

8. From fabric H, cut for:

Block B -

Widthwise, 4 (1 1/2" x 42"). Subcut 8 (1 1/2" x 7 1/2") and 8 (1 1/2" x 8 1/2") rectangles.

9. From fabric I, cut for:

Block B -

Widthwise, 1 (6 1/2" x 42"). Subcut 4 (3 1/2" x 6 1/2") rectangles.

10. From fabric J, cut for:

Outer border -

Widthwise, 5 (2 1/2" x 42"). Subcut 2 (2 1/2" x 41 1/2") from 2 strips. Piece remaining 3 strips and subcut 2 (2 1/2" x 46 1/2") strips.



WINDHAM FABRICS

Mariposa Garden

Page 5

Block A Construction:

1. Sew 1 (1 1/2" x 10 1/2") fabric F rectangle to each side of a 1 (7 1/2" x 10 1/2") fabric B rectangle. Sew 1 (1 1/2" x 9 1/2") fabric B rectangle to the top and bottom of fabric B rectangle.



2. Sew 2 (1 1/2" x 12 1/2") fabric A rectangles to the opposite long sides of block center. Sew 2 (1 1/2" x 11 1/2") fabric A rectangles to the remaining opposite short sides of block center to complete 1 block.



3. Repeat to make a total of 5 blocks.



WINDHAM FABRICS

Mariposa Garden

Page 6

Block B Construction

1. Sew 2 (1 1/2" x 6 1/2") fabric D rectangles to each side of a 1 (3 1/2" x 6 1/2") fabric I rectangle. Sew 2 (1 1/2" x 5 1/2") fabric D rectangles to the top and bottom sides of fabric I rectangle.



2. Add subsequent framing pieces to block center to complete 1 block:

- 1) 2 (1 1/2" x 8 1/2") fabric H rectangles to the opposite long sides of block center, then 2 (2 1/2" x 7 1/2") fabric H rectangles to the remaining opposite short sides of block center.
- 2) 2 (1 1/2" x 10 1/2") fabric C rectangles to the opposite long sides of block center, then 2 (1 1/2" x 9 1/2") fabric C rectangles to the remaining opposite short sides of block center.
- 3) 2 (1 1/2" x 12 1/2") fabric G rectangles to the opposite long sides of block center, then 2 (1 1/2" x 11 1/2") fabric G rectangles to the remaining opposite short sides of block center.



3. Repeat to make a total of 4 blocks.



WINDHAM FABRICS

Mariposa Garden

Page 7

Quilt Assembly

1. Row assembly. Arrange and sew 3 blocks and 2 (1 1/2" x 14 1/2") fabric E sashing rectangles into rows as shown.

Rows 1 & 3



Row 2



2. Quilt Center. Sew rows and 2 (1 1/2" x 35 1/2") fabric E sashing strips to complete quilt center.



WINDHAM FABRICS

Mariposa Garden

Page 8

3. Inner border. Sew 1 (1 1/2' x 44 1/2") fabric E strip to each side of quilt center. Sew 1 (1 1/2" x 37 1/2") fabric E strip to the top and bottom of quilt center.

4. Outer border. Sew 2 (2 1/2" x 46 1/2") fabric J strips to the opposite long sides of quilt center. Sew 2 (2 1/2" x 41 1/2") fabric J strips to the remaining opposite short sides of quilt center to complete quilt top.



Quilting Instructions:

1. With the backing fabric laying taut, place batting and then quilt top to form quilt sandwich. Baste sandwich. Quilt as desired. Bind to finish quilt.

Be sure to visit www.windhamfabrics.com to see the complete collection and to download other Free Projects